

Welcome Samba OlyWa

Navigate by clicking on the tabs across the top row!

Practices occur every Sunday from 5-7 pm
at the Eagles on Plum St. Come & join us!





Other



Processions

[Northwest Folklife
Festival](#), Seattle WA





Other



Processions

Fremont Solstice Parade, Seattle WA



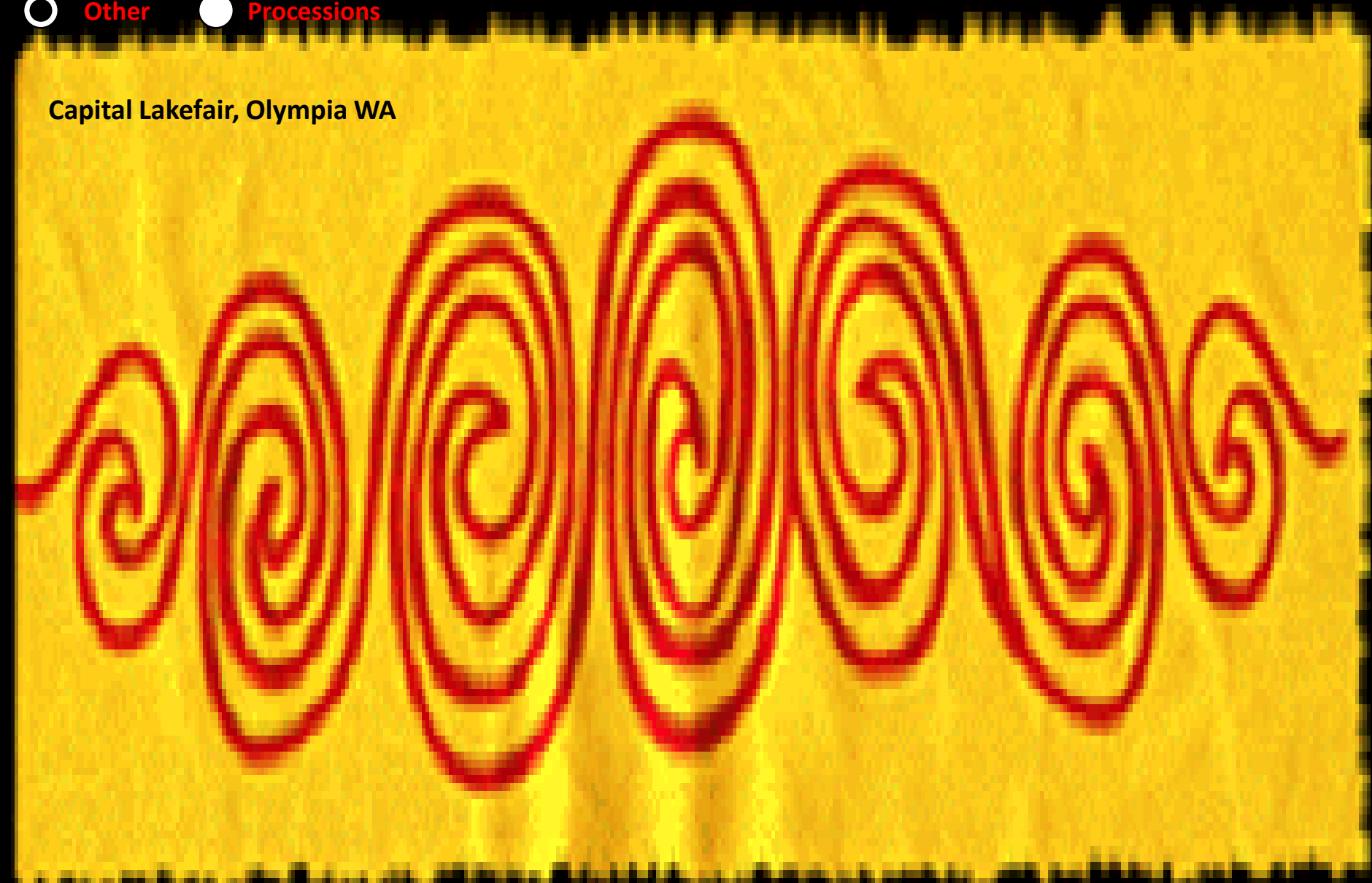


Other



Processions

Capital Lakefair, Olympia WA





Other



Processions

Bone Gang – haunting the
Capital neighborhood for
decades...



Other Performances

[Procession](#)

About Samba OlyWA



NW Folklife

Solstice

Lakefair

Halloween

Pride

Farmer's Market

Avanti

Cielo

Kids'

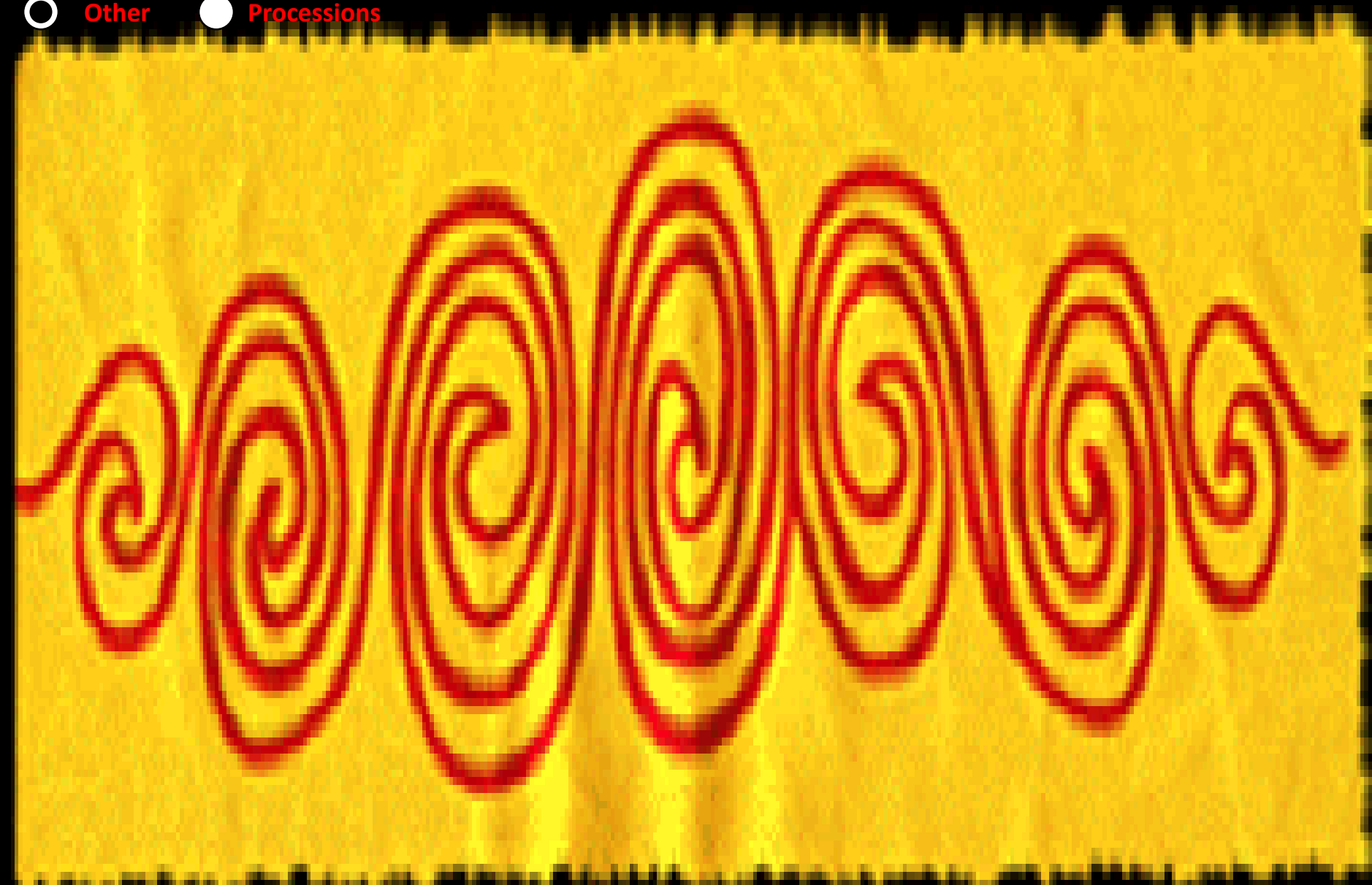
Other



Other



Processions



NW Folklife

Solstice

Lakefair

Halloween

Pride

Farmer's Market

Avanti

Cielo

Kids'

Other



Other



Processions

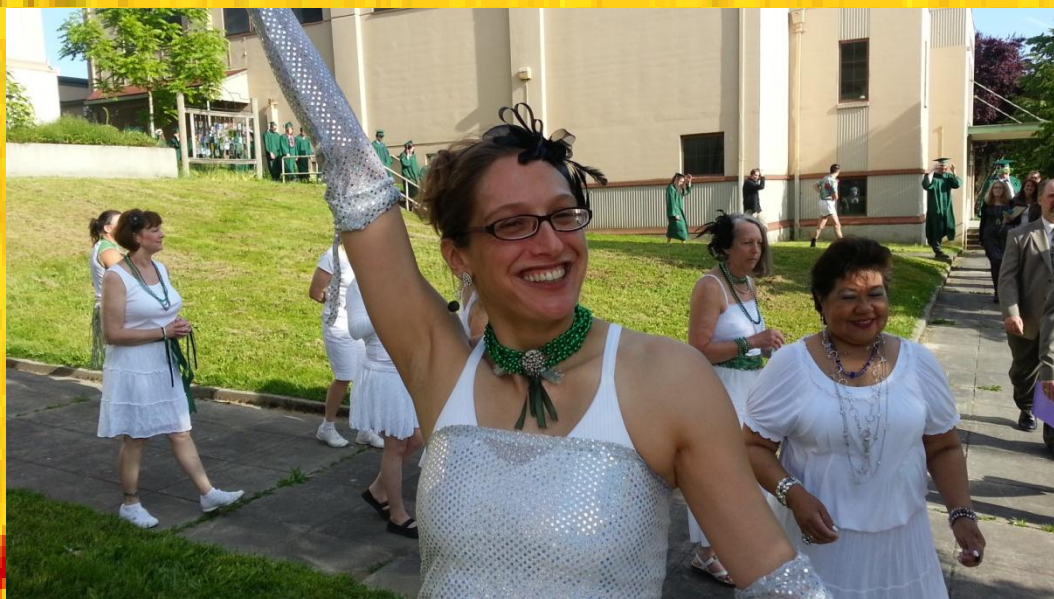




Other



Processions



Other Performances

[Procession](#)

About Samba OlyWA



NW Folklife

Solstice

Lakefair

Halloween

Pride

Farmer's Market

Avanti

Cielo

Kids'

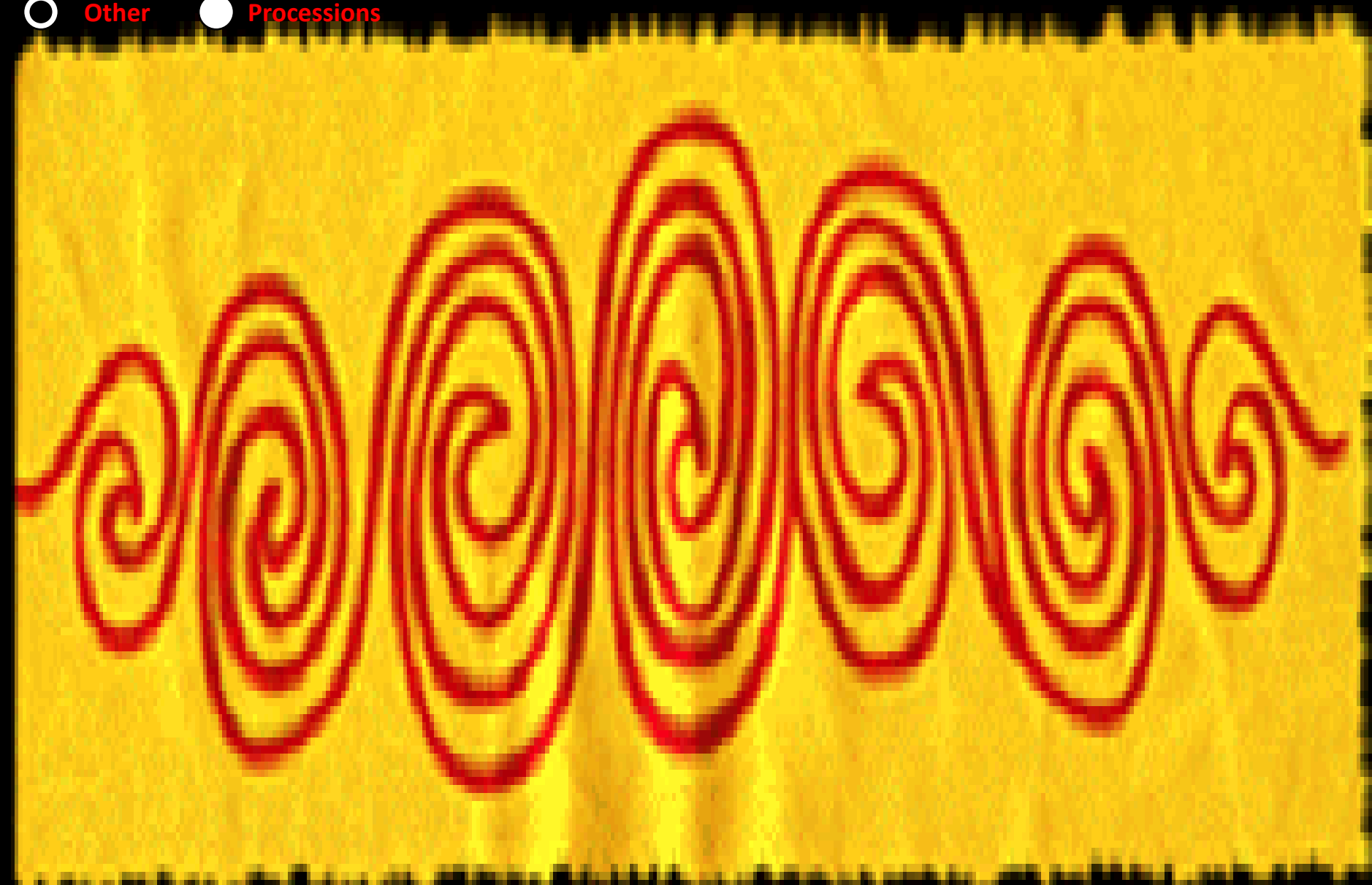
Other



Other



Processions



Other Performances

Procession

About Samba OlyWA



NW Folklife

Solstice

Lakefair

Halloween

Pride

Farmer's Market

Avanti

Cielo

Kids'

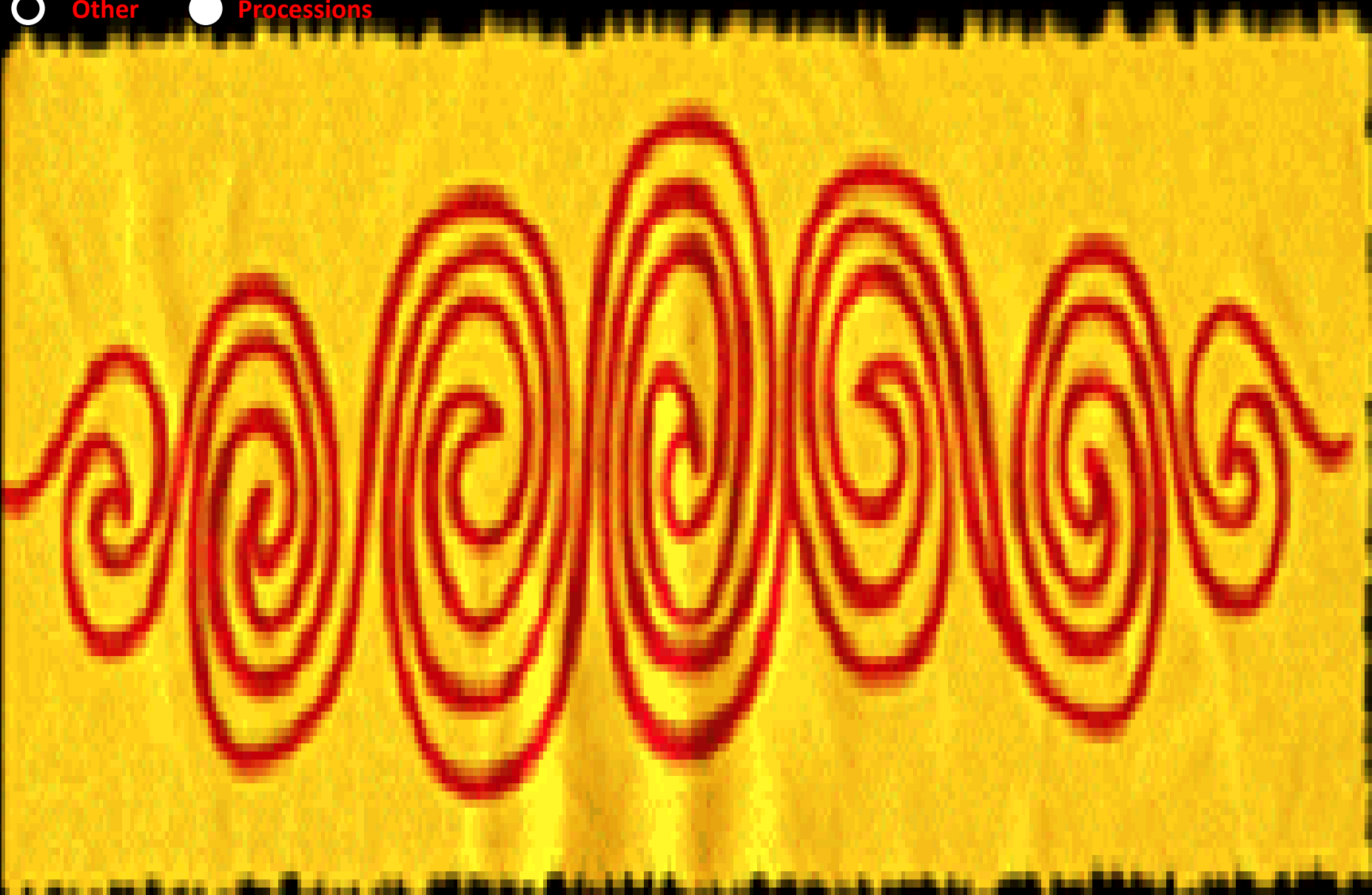
Other



Other



Processions





Other



Processions

Earthbound Gala, Opening of SafePlace, and Brazilian Beach Party





Other



Processions

2015: Sea Stars



Sea Stars

Water



Pisaster ochraceus, generally known as the purple sea star, ochre sea star or ochre starfish, is a common starfish found among the waters of the Pacific Ocean. Identified as a keystone species, *Pisaster* is considered an important indicator for the health of the intertidal zone.





Other



Processions

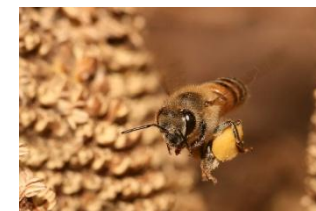
2014: Honey Bees



Honeybee:



A honey bee (or honeybee), in contrast with the stingless honey bee, is any bee that is a member of the genus *Apis*, primarily distinguished by the production and storage of honey and the construction of perennial, colonial nests from wax. Honey bees are the only extant members of the tribe Apini, all in the genus *Apis*. Currently, only seven species of honey bee are recognized, with a total of 44 subspecies, though historically, from six to eleven species have been recognized. Honey bees represent only a small fraction of the roughly 20,000 known species of bees. Some other types of related bees produce and store honey, but only members of the genus *Apis* are true honey bees.



Other Performances				Procession				About Procession				
Month	2015	2014	2013	2012	2011	2010	2009	2008	2007	2006	2005	Really Old
<div><div><input checked="" type="radio"/> Other</div><div><input type="radio"/> Processions</div></div>												

2013: Grey Wolves



Grey Wolves:

The gray wolf or grey wolf (*Canis lupus*[a]) also known as the timber wolf,[3][4] or western wolf,[b] is a canid native to the wilderness and remote areas of North America and Eurasia. It is the largest extant member of its family, with males averaging 43–45 kg (95–99 lb), and females 36–38.5 kg (79–85 lb).[6] Like the red wolf, it is distinguished from other *Canis* species by its larger size and less pointed features, particularly on the ears and muzzle.[7] Its winter fur is long and bushy, and predominantly a mottled gray in color, although nearly pure white, red, or brown to black also occur.[4] As of 2005,[8] 37 subspecies of *C. lupus* are recognized by MSW3. The nominate subspecies is the Eurasian wolf (*Canis lupus lupus*),[9] also known as the common wolf.[10]



Other Performances				Procession				About Procession				Really Old
Month	2015	2014	2013	2012	2011	2010	2009	2008	2007	2006	2005	
<input type="radio"/> Other	<input checked="" type="radio"/> Processions											

2012: Monarch Butterflies



Monarchs:

The monarch butterfly (*Danaus plexippus*) is a milkweed butterfly (subfamily *Danainae*) in the family *Nymphalidae*. It may be the most familiar North American butterfly, and is considered an iconic pollinator species.[3] Its wings feature an easily recognizable black, orange, and white pattern, with a wingspan of 8.9–10.2 cm (3½–4 in)[4] The viceroy butterfly is similar in color and pattern, but is markedly smaller and has an extra black stripe across each hind wing.

The eastern North American monarch population is notable for its annual southward late-summer/autumn migration from the United States and southern Canada to Mexico. During the fall migration, monarchs cover thousands of miles, with a corresponding multi-generational return north. normal.

Other Performances				Procession					About Procession					
Month	2015	2014	2013	2012	2011	2010	2009	2008	2007	2006	2005	Really Old		

☐ Other
 ☒ Processions

2011: Octopuses



Octopuses:



Water

☒ Other ☐ Processions

2010: The Sun



The Sun cooks!



Other Performances				Procession				About Procession					Home
Month	2015	2014	2013	2012	2011	2010	2009	2008	2007	2006	2005	Really Old	



2009: Zebras



Zebras rock!



Other Performances				Procession					About Procession					
Month	2015	2014	2013	2012	2011	2010	2009	2008	2007	2006	2005	Really Old		

☐ Other
 ☒ Processions

2008: Pink Flamingos



Pink Flamingos:



☐ Other ☒ Processions


2007: Polar Bears and Ice

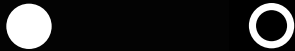


Polar Bears:



Water

Other Performances				Procession					About Procession					
Month	2015	2014	2013	2012	2011	2010	2009	2008	2007	2006	2005	Really Old		



2006: Firebirds



Firebirds:



☒ Other

☐ Processions

2005: Meadow

Meadow:



Time, it's on my side (yes it is!)

2004: Camas Meadow

2003: Desert Iguanas

2002: Puget Sound Kelp Forest

2001: Grassland

2000:

1999: Eruption of Mr. Rainier

1998: Cats and Birds

1997: Wild Animals

1996: Bees

1995:

1994:



Other



Processions

Samba OlyWa



Samba Olywa (based in OLYmpia, WAshington) is an amateur percussion and dance group dedicated to building community through the learning and sharing of Samba and other rhythms. We provide the opportunity for anyone, regardless of experience, to join us as we take our spirited and joyous energy to the streets and to the stage.

It all started in 1995 as part of the [Procession of the Species Celebration](#), The Olympia community's honoring of our natural world through the public making and sharing of art, music and dance. At first the group formed just for the Procession; little by little there were invitations to play for other events. About 1998 the group began practicing and gigging year round.

Samba Olywa performs several times a year throughout the Puget Sound region. Our performances range from small performances at private functions, to large community celebrations throughout the Sound. Visit our Facebook page (below) for photos and clips of our gigs.



Other



Processions

How did the Procession begin?

In January, 1995, a group of Olympia residents wanted to organize an event both to celebrate the 25th anniversary of Earth Day and to support Congressional renewal of the Endangered Species Act. The group decided on a positive statement of support in the form of a community celebration. They developed ideas for action and agreed on several basic tenets along with three simple rules. These became the group's working principles. The Procession of the Species Celebration was born!

What are the three rules?

No written words

No live pets

No motorized vehicles