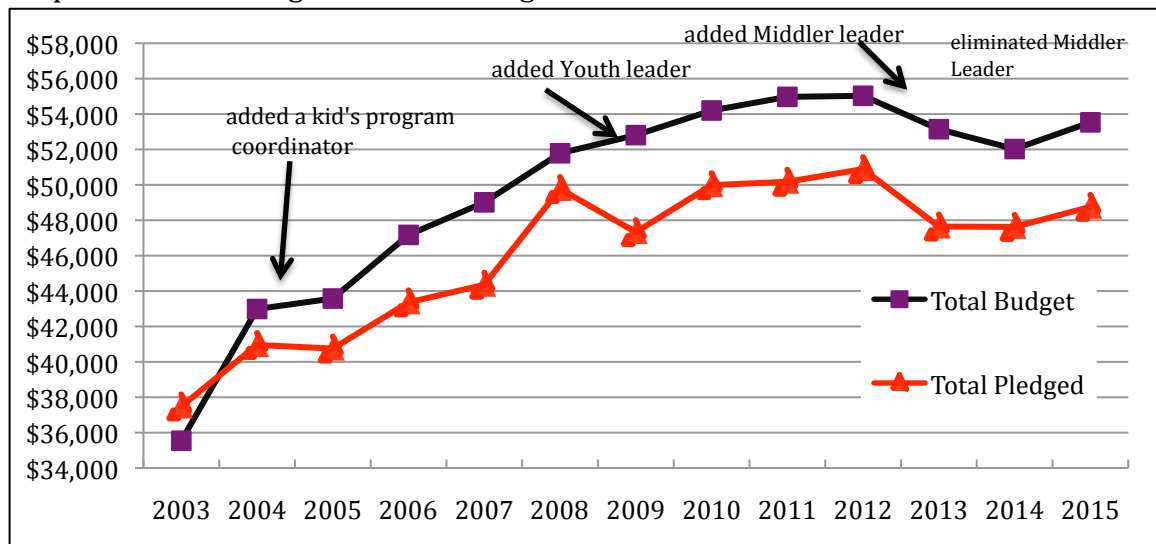


2016 CIC Pledge Packet

There has been discussion over the past couple of years about how the number of people attending CIC is shrinking. And when we talk about the sustainability of CIC, the next question is often, are our pledges shrinking as well? The following graphs will help answer that question. Prior to 2013, we steadily increased our budget and pledges each year. In 2013, our budget and pledges began to decline. However in 2015, both our budget and pledges showed a slight increase.

Graph #1: Total Budget vs. Total Pledged

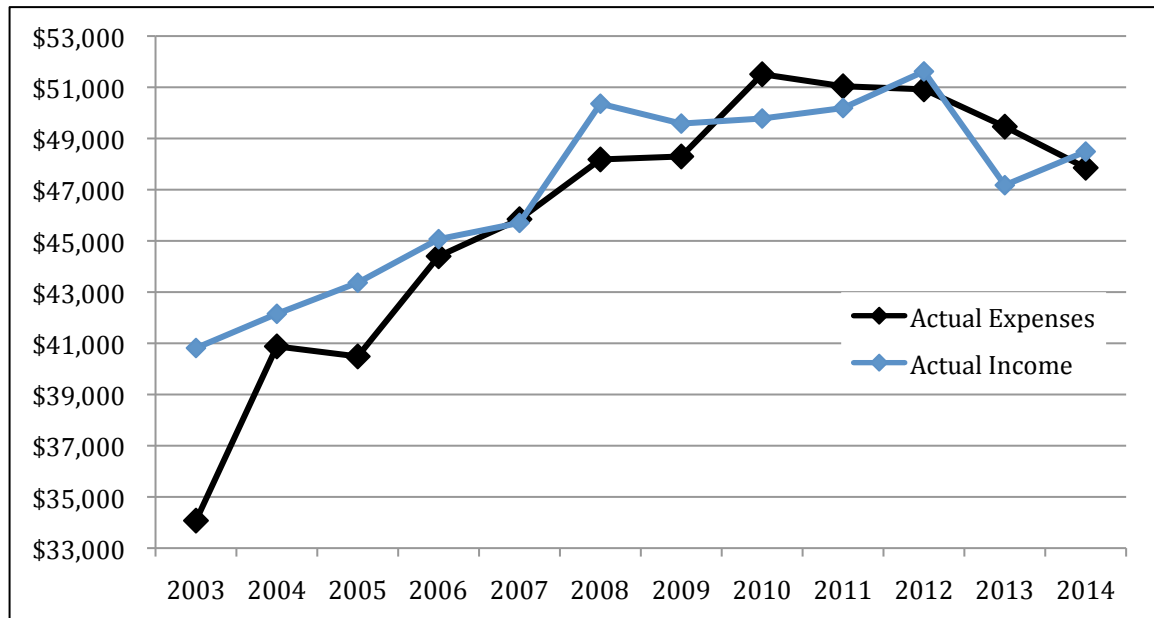


The first graph shows only *projected* numbers of what we thought we would spend and what we hoped to bring in via pledges. There is a good size gap between these two lines. We fill in this gap by using carryover money from the previous year because we never raise quite enough money in pledges to balance our budget.

The second graph (on the next page) shows our *actual* expenses and *actual* income for each year. In the second graph, you can see that our actual income line dances closely around the actual expenses line: sometimes we bring in a little more than we spend, sometimes we run a deficit. However, you can see that the lines are quite close to each other. A mysterious process seems to guide us year after year: what we spend each year is usually about equal to what we bring in via pledges, begging bowl and unanticipated donations.

2016 CIC Pledge Packet

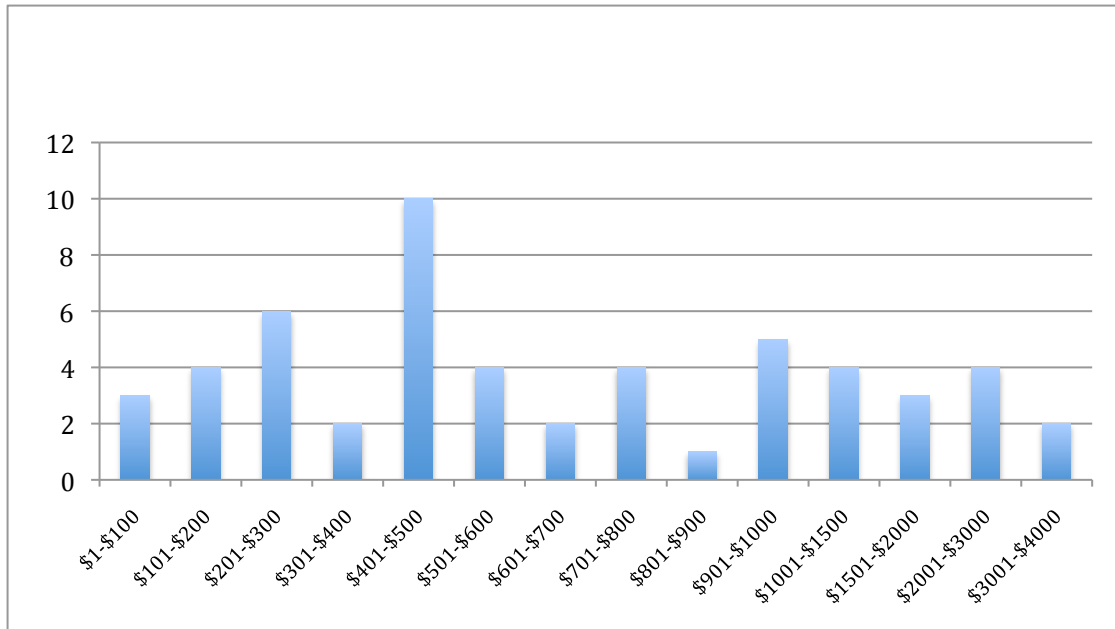
Graph #2: Actual Expenses vs. Actual Income (pledges + begging bowl + donations)



Now let's talk more specifically about **pledging and the budget for 2016**. Many people have said, "When I first came to CIC, I had no idea how much to pledge!" CIC does not have a formal "giving guide". It is up to you to decide how much to pledge.

The chart below shows the distribution of 2015 pledges. It shows the number of pledges in each amount category (\$1-\$100, \$101 - \$200 etc.). This may help guide you to the category that best fits you. 54 individuals/families pledged. The average pledge was \$903. The total amount pledged was \$48,757.

2016 CIC Pledge Packet



On 9/21/15, Townhall approved a 2016 Proposed Budget. You can access this budget via a link on our website. To create this budget, we took our 2015 budget and modified it slightly. 1) We gave staff that has worked for us longer than a year a 3% raise. 2) Since we will be hiring a new minister in January, we budgeted \$23,000 for their salary which is the top of the starting salary set by Townhall last spring. 3) We raised the reimbursement rate for a CIC member to attend the UCC Annual Meeting to \$400. It was \$200.

Please fill out the Pledge Form and turn it in to me by December 1st. You can hand it to me, drop it in the begging bowl at CIC or mail it to my PO box. You can also e-mail or text me your pledge. If you give me a monthly amount, please also give me a total for the year that you will pledge.

Thank you for all the ways you contribute to CIC!

Evie Fagergren
Finance Shepherd
PO Box 2602 Oly 98507
eviefagergren@gmail.com
360-789-4013